

# Vital Trace

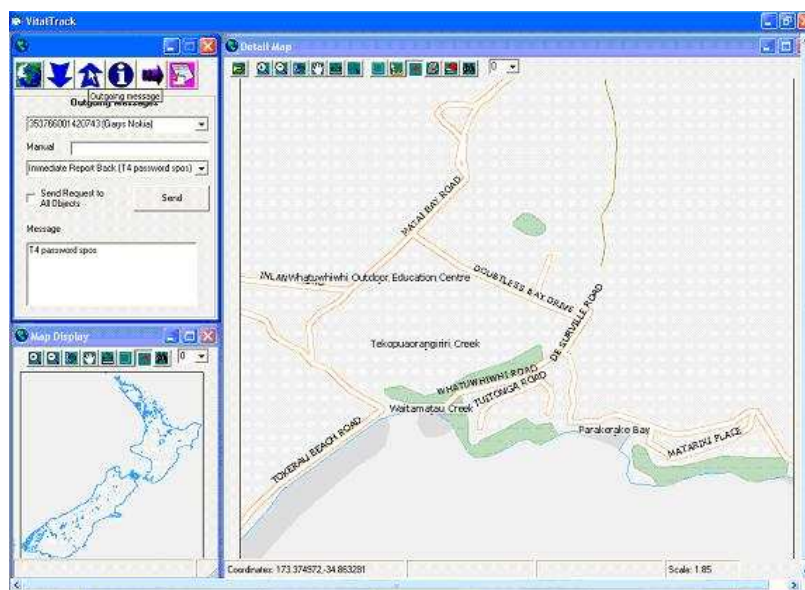


## Vital Trace PC based software "Vital Track" To Support, the Rapid Deployment GSM/GPS Tracking Unit (RDT)

### Concept

To Produce a low cost pc or laptop based software, for tracking up to 1000 units, using its own ESRI map object LT viewer or GPS enabled mapping packages to view the positions of the units. The software needs a compatible GSM modem to work. The software is built for the end user to be simple to operate.

### 1: Vital Track with ESRI map viewer.



### 2: Vital Track with GPS enabled map package (Route 66)



Specifications subject to change without notice. GSM coverage required. Vital Trace is not responsible for the operation or failure of operation of GPS satellites or the availability of GPS satellite signals or the operation or failure of operation GSM network and GSM network signal strength.

## Features

### Setting Unit Management

- Unit actions
- Location request
- Enable tracking
- Disable tracking
- Centre the map on the unit's latest location
- Send limited remote configurations
- Message forwarding.

### Unit information

- Phone number
- Latitude
- Longitude
- Date
- State (Normal, Tracking, Alert)
- Speed
- Direction

### MAP DISPLAY FUNCTIONS (not GPS package)

- Map objects
- Unit symbol
- Unit label
- Unit state indicated with colour
- Scale
- Print map view
- Country outline map supplied, to be determined by customer (detail maps additional cost).

### Tools

- Centre on location
- Load ESRI shape files
- Locate unit
- Load log files
- Review positions for last 48 hours
- Measure
- Show map tips
- Print map

### Setting Configuration

- Units management
- Add new unit to the system
- Delete unit from the system
- Name of the unit
- Calling number (International format) of the unit
- Automatic position refresh with user definable interval and duration

### SMS config

- Modem connection (additional cost).
- Alert settings
- Report when settling an alert
- Enable/disable tracking in case of an alert
- Play sound once
- Send predefined or user defined SMS to a pre-specified numbers
- Coordinate systems
- Latitude/longitude

### Playback

- Review all incoming messages
- Search date
- Search Unit name
- Play log file

### External Port setting

- Configure port to GPS enable map package.
- Enable port
- Disable port
- Require Virtual port software (additional cost).

### The Software is Licensed by the amount of icons displayed on screen.

- Up to 2 Icons
- Up to 10 Icons
- Up to 100 Icons
- Unlimited

The **Vital Track** software can have inbuilt maps (ESRI shape files). These tend to be expensive.

For this reason we have built in the ability to show the position on GPS enabled mapping packages like Route 66 "Route Britain". Gps enabled mapping packages only have the ability to show one Tracking unit at a time.

Vital Trace has tested "**Vital Track**" on many GPS enabled map packages, but please advise us which package you wish to use the system with.

The **Vital Track** software has the ability to be used any where in the world. If you are not aware of maps for your desired area of operation, please ask us and we may be able to find maps for you. Ask for our International Map Data List.

Specifications subject to change without notice. GSM coverage required. Vital Trace is not responsible for the operation or failure of operation of GPS satellites or the availability of GPS satellite signals or the operation or failure of operation GSM network and GSM network signal strength.